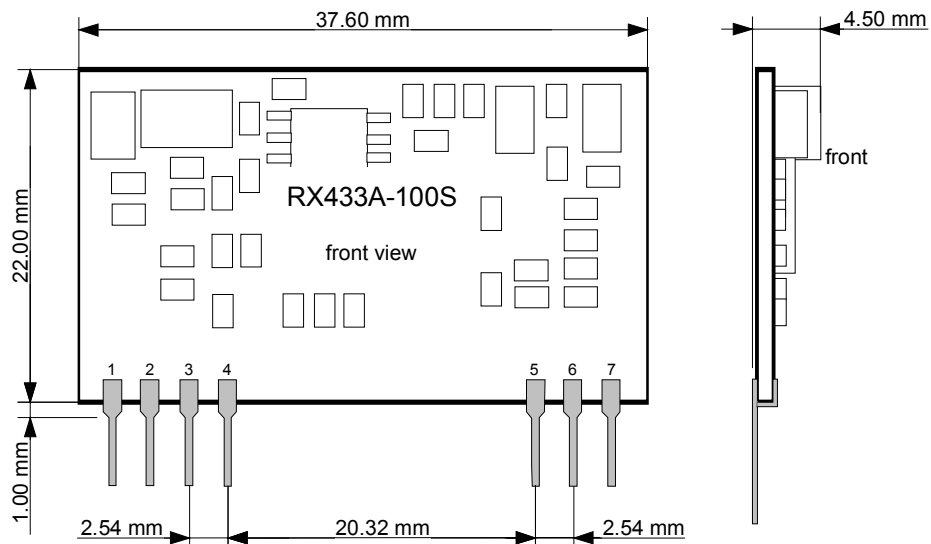


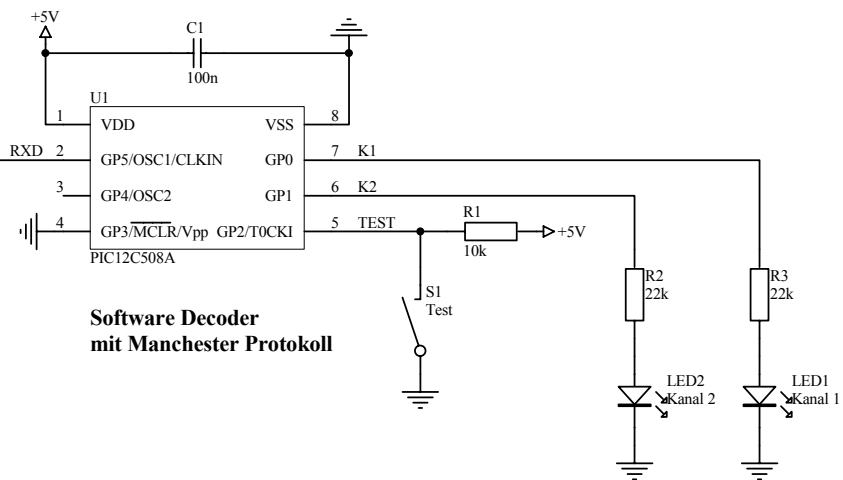
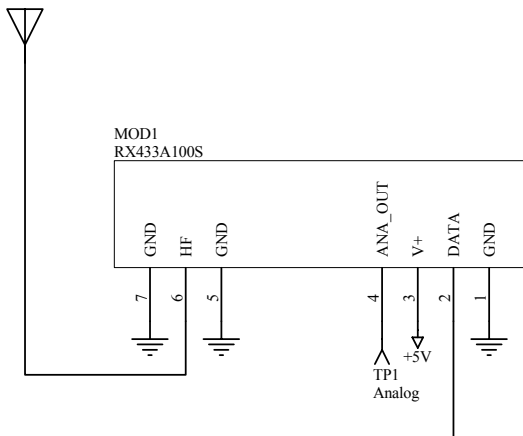
Mech. Abmessungen

Leadframe: pins 0.5 x 0.2mm

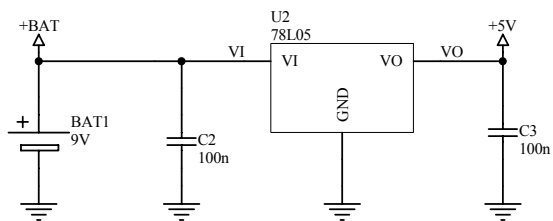
Pinbelegung

Pin	Name	Beschreibung
1	GND	Masse
2	DATA	Modulationsdaten, digitaler Ausgang
3	V+	Speisung +3.5 +5.5 Volt
4	ANA_OUT	Modulationsdaten, analoger Ausgang
5	GND	Masse
6	HF	HF-Eingang für $\lambda / 4$ Antenne (ca. 50 Ohm)
7	GND	Masse

Antenne 50 Ohm



Software Decoder
mit Manchester Protokoll



Title: RX433A-100S Applikationsbeispiel		
File: RX433A-100S		
Date: 10-Dec-2001	REV 1	Sheet 1 of 1

